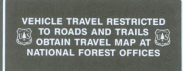


SIGNS
The boundary of Travel Restricted Areas may be marked as shown below; also refer to "Special Order for Areas, Roads, and Trails"



Other signs you may encounter are:

SYMBOLS

- TWO-WHEEL MOTOR VEHICLE
- SEDAN
- HIGH CLEARANCE VEHICLE 4x4 AND PICKUP
- ALL-TERRAIN VEHICLE
- SNOWMOBILE
- Symbol with RED SLASH indicates activity not allowed. Symbol with YELLOW SLASH indicates activity not recommended.
- BICYCLES
- NATIONAL FOREST ROUTE MARKERS
- TRAVEL MANAGEMENT POSTER
- 214 Roads maintained for LOW clearance vehicles, such as sedans, trailers and motorhomes.
- 3 Roads suitable for HIGH clearance vehicles, such as 4x4 and pickup.

REFER TO MAP FOR SPECIFIC VEHICLE & ROUTE DESIGNATIONS!



HOW TO TREAD LIGHTLY

- Obtain a Travel Map from the Forest Service, or regulations from other public land agencies. Learn the rules and follow them.
- Avoid running over young trees, shrubs, and grasses—damaging or killing them.
- Stay off soft, wet roads and trails readily torn up by vehicles (particularly during hunting seasons). Repairing the damage is expensive.
- Travel around meadows, steep hillsides, or streambanks and lakeshores easily scarred by churning wheels.
- Resist the urge to pioneer a new road or trail, or to cut across a switchback.
- Stay away from wild animals that are rearing young—or suffering from food shortage. Stress can sap scarce energy reserves.
- Obey game closures and regulatory signs. Vandalism costs tax dollars.
- Stay out of Wildernesses. They're closed to all vehicles. Know where the boundaries are.
- Get permission to travel across private land. Respect landowner rights.

Future opportunities for exciting travel with your recreation vehicle are in your hands, so—TREAD LIGHTLY!

Forest Supervisor's Message

Welcome to the Manti-La Sal National Forest. I hope you enjoy your stay. This Travel Map is designed to identify a wide range of recreational travel opportunities. It was developed to help you know where to travel and under what conditions. This revision of the Travel Map identifies over 3,000 miles of roads and trails open for motorized use. Not all areas, roads, and trails are available for all uses. Some restrictions have been made to reduce soil erosion, improve water quality, and protect wildlife during critical seasons.

Have fun! Use your equipment safely and look out for other users!

If you have questions or would like more information about your National Forest, please feel free to contact any of our offices.

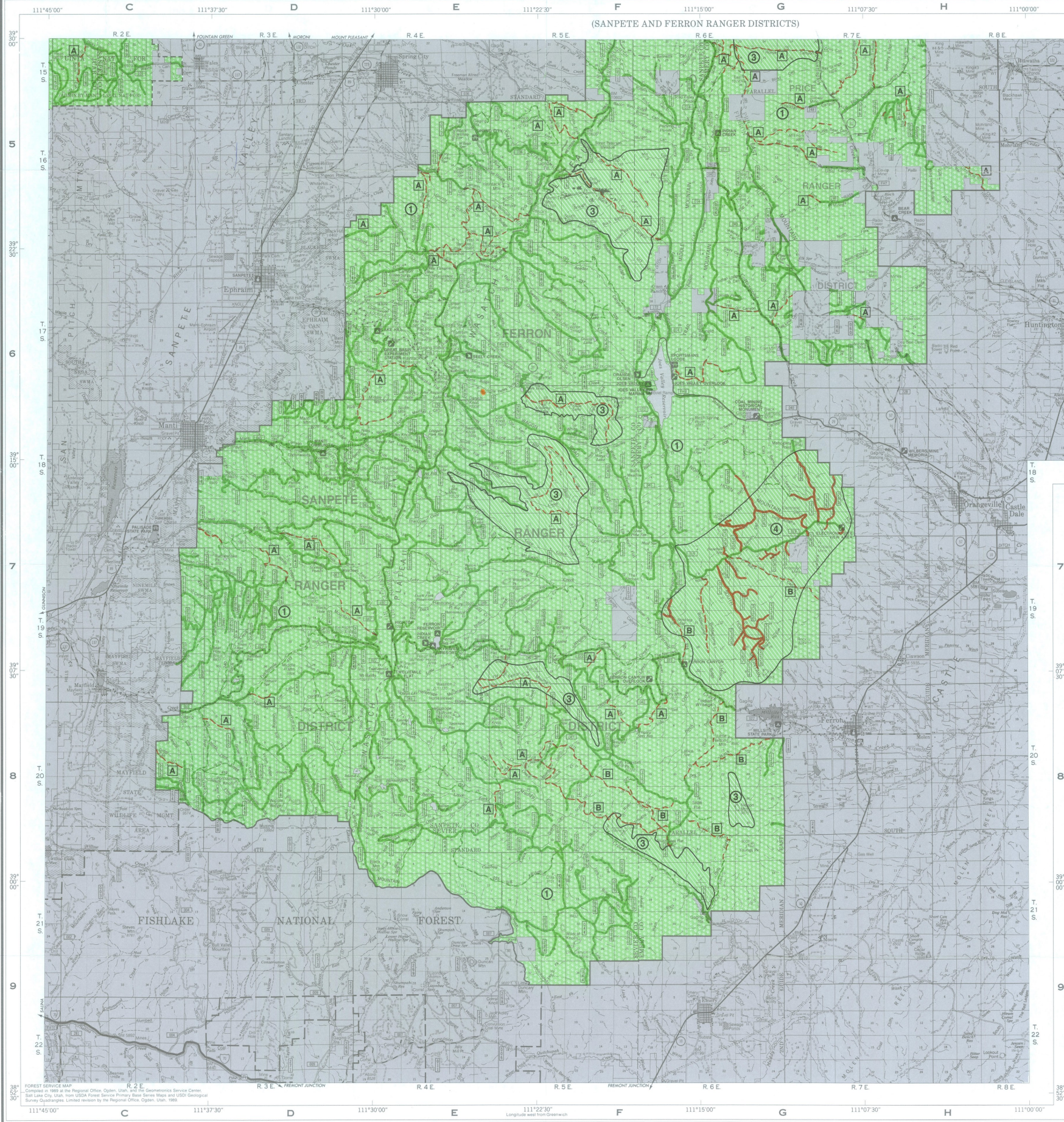
George A. Morris
Forest Supervisor

TRAVEL MAP LEGEND

- Lands not covered by this Map. (This Travel Map applies only to the National Forest.)
- National Forest lands open to all vehicles, except where restricted.
- National Forest areas with restrictions.
- National Forest areas closed year long to all motorized use.
- 1 AREA USE RESTRICTIONS Reference Number. (Types of vehicles and time periods of restrictions listed in AREA USE RESTRICTIONS MATRIX.)
- Forest Development Road open to all vehicles.
- Forest Development Road closed to over-snow vehicles.
- Forest Development Trail open to any snowmobile, all terrain vehicle (ATV), motorcycle, or any other motorized vehicle use with tread widths not exceeding trail width.
- A Forest Development Trail with restrictions.

NOTE: Existing roads and/or trails that do not appear on this map are closed to motorized use unless otherwise shown.

All Forest Development Roads, Trails, and Lands are subject to temporary closures. Closures will be signed on the ground, and posted at the local Forest Service offices. Roads closed by snow are open to over-snow vehicle use, except as indicated in AREA USE RESTRICTION 1. For current road and trail conditions, contact the local Ranger District office.



AREA USE RESTRICTIONS
There may be some trails or roads which are open in areas otherwise closed to motorized/mechanized vehicles. They are specially noted on the map.

REFERENCE NUMBER	VEHICLES RESTRICTED
1	All motorized vehicles restricted year long to routes as shown on this map, except over-snow machines operating on adequate snow.
2	Closed to over-snow vehicles.
3	National Forest area closed year long to all motorized use.
4	National Forest area closed year long except for routes shown on this map. Over-snow vehicles permitted on roads 019 and 070 only.

Off road and off trail use is permissible within restricted areas when:
-Exercising the provisions of a valid permit or written authorization by a Forest Officer; fuelwood, grazing, etc.
-Utilizing undeveloped camp or picnic areas, or the removal of game, within 100 feet of an open Forest Development Road or Trail, unless the area is signed as closed to those uses.

TRAIL OPPORTUNITIES/RESTRICTIONS

REFERENCE SYMBOL	TWO-WHEEL MOTORIZED VEHICLES	OVER-SNOW VEHICLES	ATV'S	BICYCLES
A	Prohibited yearlong	Prohibited yearlong	Prohibited yearlong	Open
B	Intermittent closure Dec. 1 - April 15	Intermittent closure Dec. 1 - April 15	Intermittent closure Dec. 1 - April 15	Intermittent closure Dec. 1 - April 15
C	Prohibited yearlong	Prohibited yearlong	Prohibited yearlong	Prohibited yearlong

ORDER FOR AREAS, ROADS, AND TRAILS

This Travel Map depicts road, trail, and area restrictions on the Manti-La Sal National Forest by order of George A. Morris, Forest Supervisor, in accordance with 36 CFR 261.50. Copies of the order are available for inspection at all Ranger District offices and the Forest Supervisor's Office. Violations of this prohibition is punishable by a fine of not more than \$5,000 or imprisonment of not more than 6 months or both (16 USC 551, 18 USC 357).

MANTI-LA SAL NATIONAL FOREST
(SANPETE, FERRON AND PRICE RANGER DISTRICTS)

UTAH AND COLORADO SALT LAKE AND NEW MEXICO PRINCIPAL MERIDIANS
1989



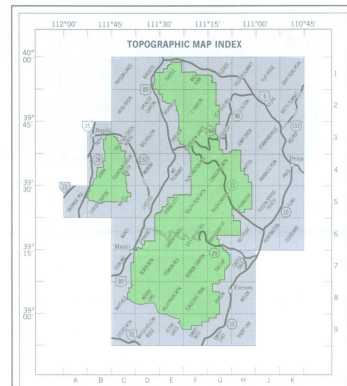
LEGEND

- National Forest Boundary
- Adjacent Forest Boundary
- Administrative Boundary
- Ranger District Boundary
- County Boundary
- Special Area Boundary
- State Wildlife Management Area
- Interstate Highway
- State Highway
- U.S. Highway
- Roads Maintained for Low Clearance Vehicles such as Sedans, Trailers, and Motorhomes
- Roads Suitable for High Clearance Vehicles Only
- Trail Route
- Primary Highway
- Secondary Highway
- Improved Gravel Road
- Unimproved Dirt Road
- Unimproved Dirt Road
- Trail
- Railroad
- Power Transmission Line
- Gravel Washed Trail and Adventure Highway
- Scenic Byway
- Forest Supervisor's Office Price Dist.
- District Ranger Office
- Other Forest Service Facility
- Open Pit Mine or Quarry
- Mine Tunnel Entrance
- Gravel or Stone Pit
- Mine Shaft
- Local Landmark Object
- Recreation Site
- Point of Interest
- Horizontal Control Station
- Spring
- House, School, Church or other Building

TOWNSHIP AND SECTION LINE CLASSIFICATION

- Surveyed, location release
- Surveyed, location approximate
- Unsurveyed (Bureau of Land Management) or Forest Service production

The Forest Service, U.S. Department of Agriculture, is committed to the policy that all persons shall have access to its programs, facilities, and employment without regard to race, religion, color, sex, age, or national origin. Public lands outside the National Forest boundaries were compiled from BLM and other maps. Check with the appropriate agency for current land status information. Public lands are subject to change and leasing. Local inquiry should be made before entering.



Best showing indicates U.S. Forest Service Primary Base Series Quadrangles. Topographic maps are available from:
Branch of Distribution, U.S. Geological Survey, Box 2008, Reston, Virginia 20192
U.S. Geological Survey, Room 8025, Federal Building, 225 South State Street, Salt Lake City, Utah 84103 (801) 524-8462
Compagnoni National History Association, 100 South Main Street, Ephraim, Utah 84607

Emergency Phone Numbers

SANPETE COUNTY SHERIFF (801) 855-2391
FERRON COUNTY SHERIFF (801) 891-4444
UTAH COUNTY SHERIFF (801) 524-8800
UTAH COUNTY SHERIFF (801) 524-8800

Sanpete Ranger District (801) 855-2391
Ferron Ranger District (801) 891-4444
Price Ranger District (801) 855-2391

Monticello Ranger District (801) 855-2391
North Sanpete Ranger District (801) 855-2391
South Sanpete Ranger District (801) 855-2391
Utah County Ranger District (801) 855-2391

Information: For further information about the Manti-La Sal National Forest, contact the Forest Supervisor's Office, 100 South Main Street, Ephraim, Utah 84607. The telephone number is (801) 855-2391. Closed vehicles and motor equipment are prohibited on all roads, trails, and areas unless otherwise indicated on this map. For more information, contact the local Ranger District office.

Forest Service
United States Department of Agriculture

Manti-La Sal National Forest
Sanpete, Ferron and Price Ranger Districts

TRAVEL MAP

America's Great Outdoors