

### SIGNS

The boundary of Travel Restricted Areas may be marked as shown below; also refer to "Special Order for Areas, Roads, and Trails"

Other signs you may encounter are:

**SYMBOLS**

- TWO-WHEEL MOTOR VEHICLE
- HIGH CLEARANCE VEHICLE 4x4 AND PICKUP
- SNOWMOBILE
- BICYCLES
- TRAVEL MANAGEMENT POSTER

**SEDAN**

**ALL-TERRAIN VEHICLE**

**NATIONAL FOREST ROUTE MARKERS**

**214**

Roads maintained for LOW clearance vehicles, such as sedans, trailers and motorcycles.

Roads suitable for HIGH clearance vehicles, such as 4x4 and pickup.

**TRAVEL MANAGEMENT POSTER**

This Area is Open To:

SEDAN 4x4 PICKUP

CLOSED TO ALL OTHER USES

TO RETURN ROAD OR TRAIL TO ITS ORIGINAL CONDITION

REFER TO MAP FOR SPECIFIC VEHICLE & ROUTE DESIGNATIONS!

### AREA USE RESTRICTIONS

There may be some trails or roads which are open in areas otherwise closed to motorized/mechanized vehicles. They are specially noted on the map.

REFERENCE NUMBER	VEHICLES RESTRICTED
1	All motorized vehicles restricted year long to routes as shown on this map, except over-snow machines operating on adequate snow.
2	Closed to over-snow vehicles.
3	National Forest area closed year long to all motorized use.
4	National Forest area closed year long except for routes shown on this map. Over-snow vehicles permitted on roads 019 and 070 only.

Off road and off trail use is permissible within restricted areas when:  
 \*Executing the provisions of a valid permit or written authorization by a Forest Officer; fuelwood, grazing, etc.  
 \*Utilizing undeveloped camp or picnic areas, or the retrieval of game, within 150 feet of an open Forest Development Road or Trail, unless the area is signed as closed to those uses.

### TRAIL OPPORTUNITIES/RESTRICTIONS

REFERENCE SYMBOL	TWO-WHEEL MOTORIZED VEHICLES	OVERSNOW VEHICLES	ATV'S	BICYCLES
A	Prohibited yearlong	Prohibited yearlong	Prohibited yearlong	Open
B	Intermittent closure Dec. 1 - April 15	Intermittent closure Dec. 1 - April 15	Intermittent closure Dec. 1 - April 15	Intermittent closure Dec. 1 - April 15
C	Prohibited yearlong	Prohibited yearlong	Prohibited yearlong	Prohibited yearlong

### Forest Supervisor's Message

Welcome to the Manti-La Sal National Forest. I hope you enjoy your stay. This Travel Map is designed to identify a wide range of recreational travel opportunities. It was developed to help you know where to travel and under what conditions. This revision of the Travel Map identifies over 3,000 miles of roads and trails open for motorized use. Not all areas, roads, and trails are available for all uses. Some restrictions have been made to reduce soil erosion, improve water quality, and protect wildlife during critical seasons.

Have fun! Use your equipment safely and look out for other users!

If you have questions or would like more information about your National Forest, please feel free to contact any of our offices.

*George A. Morris*  
 Forest Supervisor



### HOW TO TREAD LIGHTLY

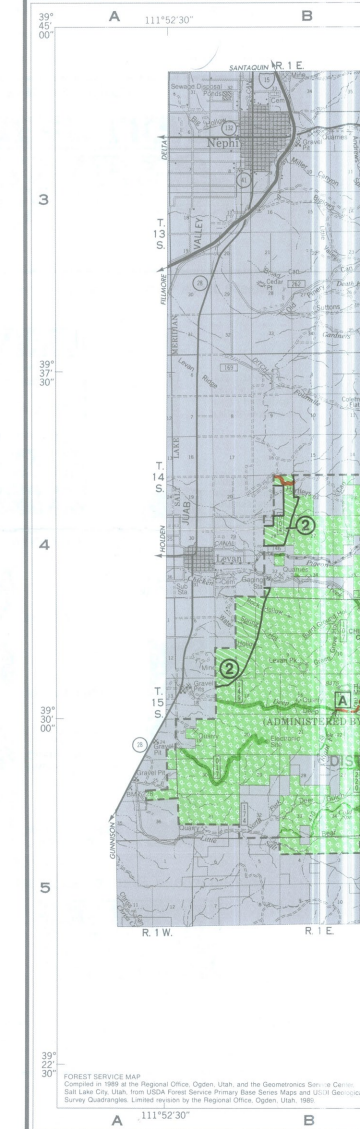
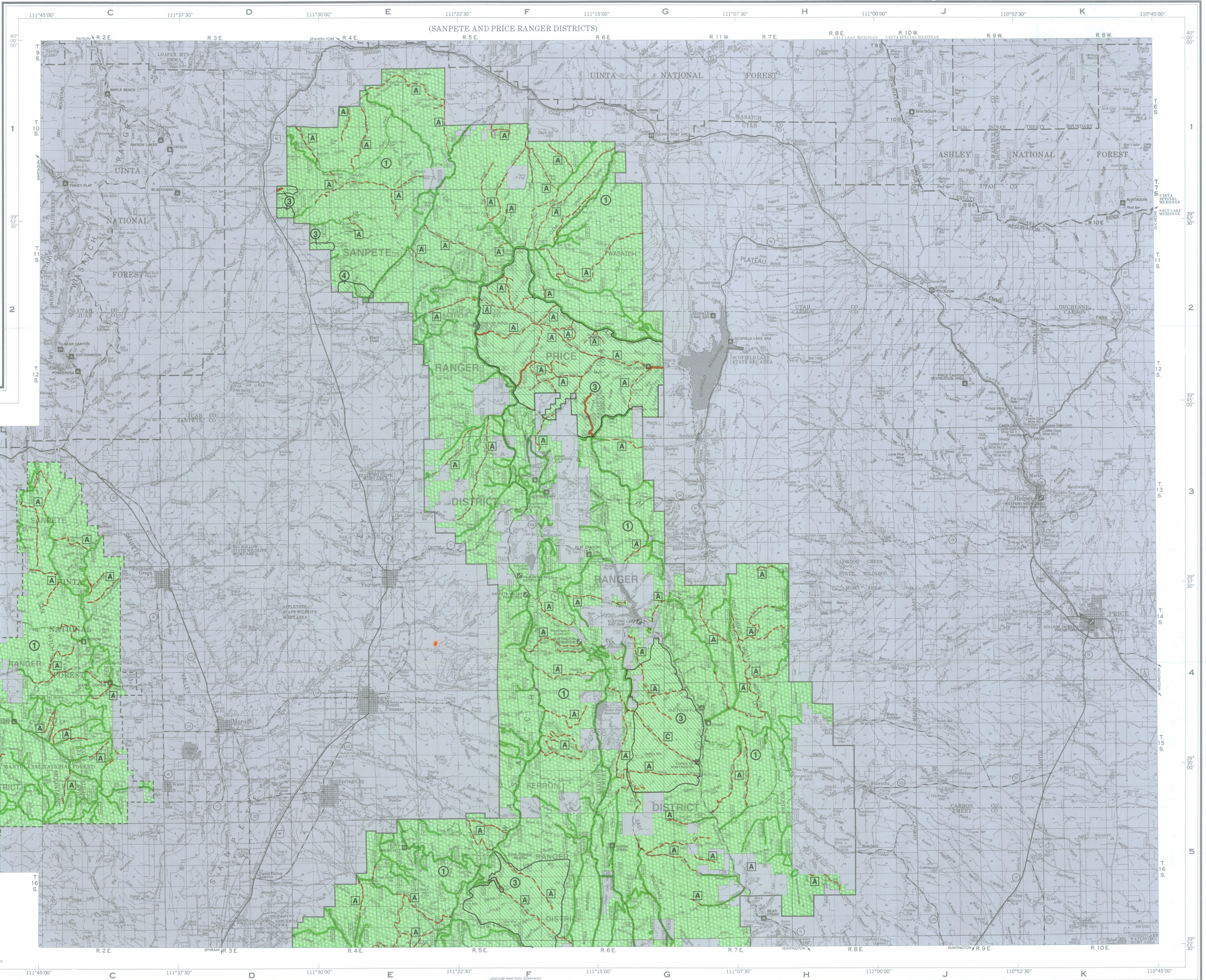
- Obtain a Travel Map from the Forest Service, or regulations from other public land agencies. Learn the rules and follow them.
  - Avoid running over young trees, shrubs, and grasses—damaging or killing them.
  - Stay off soft, wet roads and trails readily torn up by vehicles (particularly during hunting seasons). Repairing the damage is expensive.
  - Travel around meadows, steep hillsides, or streambanks and lakeshores easily scarred by churning wheels.
  - Resist the urge to pioneer a new road or trail, or to cut across a switchback.
  - Stay away from wild animals that are rearing young—r suffering from food shortage. Stress can sap scarce energy reserves.
  - Obey gate closures and regulatory signs. Vandalism costs tax dollars.
  - Stay out of Wildernesses. They're closed to all vehicles. Know where the boundaries are.
  - Get permission to travel across private land. Respect landowner rights.
- Future opportunities for exciting travel with your recreation vehicle are in your hands, so—TREAD LIGHTLY!

### ORDER FOR AREAS, ROADS, AND TRAILS

This Travel Map depicts road, trail, and area restrictions on the Manti-La Sal National Forest by order of George A. Morris, Forest Supervisor, in accordance with 36 CFR 261.50. Copies of the order are available for inspection at all Ranger District offices and the Forest Supervisor's Office. Violations of this prohibition is punishable by a fine of not more than \$5,000 or imprisonment of not more than 6 months or both (16 USC 551, 18 USC 3571).

### TRAVEL MAP LEGEND

- Lands not covered by this Map. (This Travel Map applies only to the National Forest.)
  - National Forest lands open to all vehicles, except where restricted.
  - National Forest areas with restrictions.
  - National Forest areas closed year long to all motorized use.
  - AREA USE RESTRICTIONS Reference Number. (Types of vehicles and time periods of restrictions listed in AREA USE RESTRICTIONS MATRIX.)
  - Forest Development Road open to all vehicles.
  - Forest Development Road closed to over-snow vehicles.
  - Forest Development Trail open to any snowmobile, all terrain vehicle (ATV), motorcycle, or any other motorized vehicle use with tread widths not exceeding trail width.
  - Forest Development Trail with restrictions.
- NOTE:** Existing roads and/or trails that do not appear on this map are closed to motorized use unless otherwise shown.
- All Forest Development Roads, Trails, and Lands are subject to temporary closures. Closures will be signed on the ground, and posted at the local Forest Service offices. Roads closed by snow are open to over-snow vehicle use, except as indicated in AREA USE RESTRICTION 1. For current road and trail conditions, contact the local Ranger District office.



FOREST SERVICE MAP  
 Completed in 1988 at the Regional Office, Ogden, Utah and the Department Office in Salt Lake City, Utah. From USDA Forest Service Primary Base Series Maps and USGS Base Series Quadrangles. Updated April 1989.