

39.43333° N 39.46667° N 39.50000° N 39.53333° N 39.56667° N 39.60000° N 39.63333° N 39.66667° N

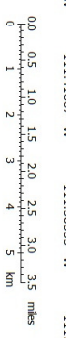
111.65000° W 111.61667° W 111.58333° W 111.55000° W 111.51667° W 111.48333° W 111.45000° W 111.41667° W 111.38333° W 111.35000° W 111.31667° W 111.28333° W 111.25000° W 111.21667° W 111.18333° W 111.13333° W

111.65000° W 111.61667° W 111.58333° W 111.55000° W 111.51667° W 111.48333° W 111.45000° W 111.41667° W 111.38333° W 111.35000° W 111.31667° W 111.28333° W 111.25000° W 111.21667° W 111.18333° W 111.13333° W

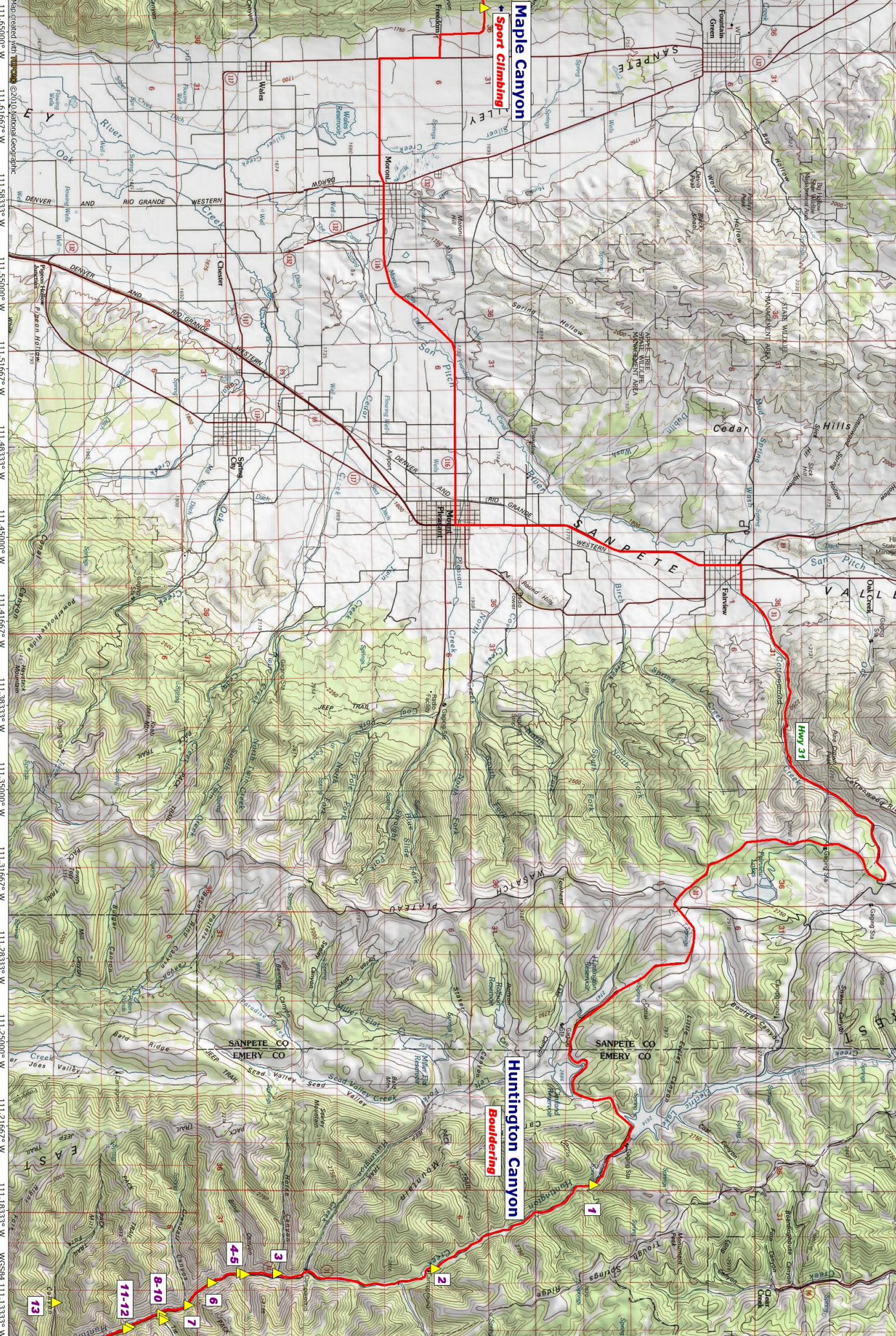


NATIONAL GEOGRAPHIC

Map created with <https://www.nationalgeographic.com> ©2010 National Geographic



11/21/11 11°N 115°W



Maple Canyon
Sport Climbing

Huntington Canyon
Bouldering

Hwy 31

11-12

8-10

6

7

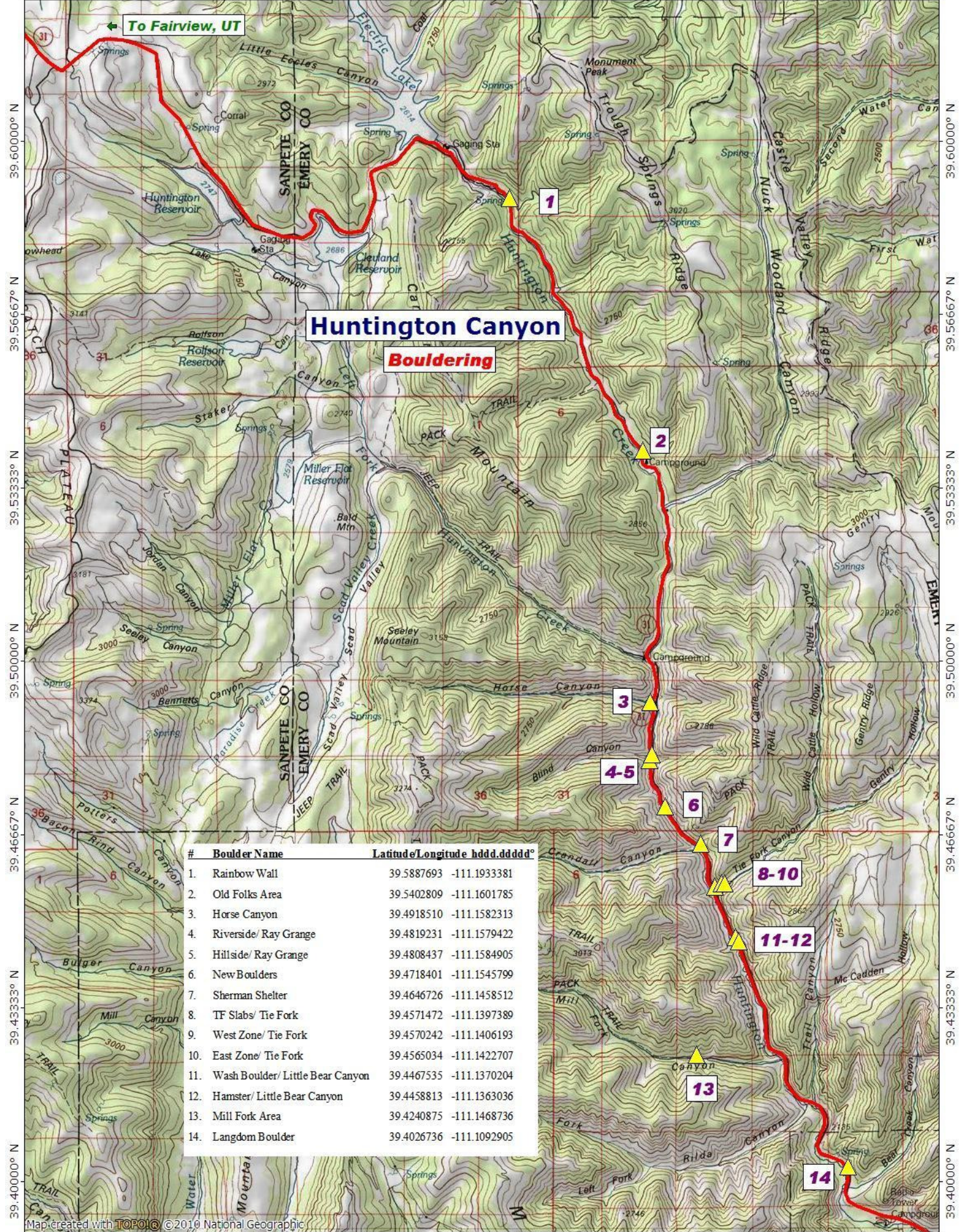
4-5

3

2

1

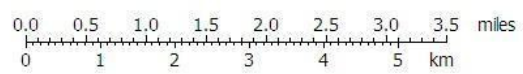
13



Huntington Canyon
Bouldering

#	Boulder Name	Latitude	Longitude	hddd.ddddd°
1.	Rainbow Wall	39.5887693	-111.1933381	
2.	Old Folks Area	39.5402809	-111.1601785	
3.	Horse Canyon	39.4918510	-111.1582313	
4.	Riverside/ Ray Grange	39.4819231	-111.1579422	
5.	Hillside/ Ray Grange	39.4808437	-111.1584905	
6.	New Boulders	39.4718401	-111.1545799	
7.	Sherman Shelter	39.4646726	-111.1458512	
8.	TF Slabs/ Tie Fork	39.4571472	-111.1397389	
9.	West Zone/ Tie Fork	39.4570242	-111.1406193	
10.	East Zone/ Tie Fork	39.4565034	-111.1422707	
11.	Wash Boulder/ Little Bear Canyon	39.4467535	-111.1370204	
12.	Hamster/ Little Bear Canyon	39.4458813	-111.1363036	
13.	Mill Fork Area	39.4240875	-111.1468736	
14.	Langdom Boulder	39.4026736	-111.1092905	

Map created with TOPO! © 2010 National Geographic



TN MN
11 1/2°