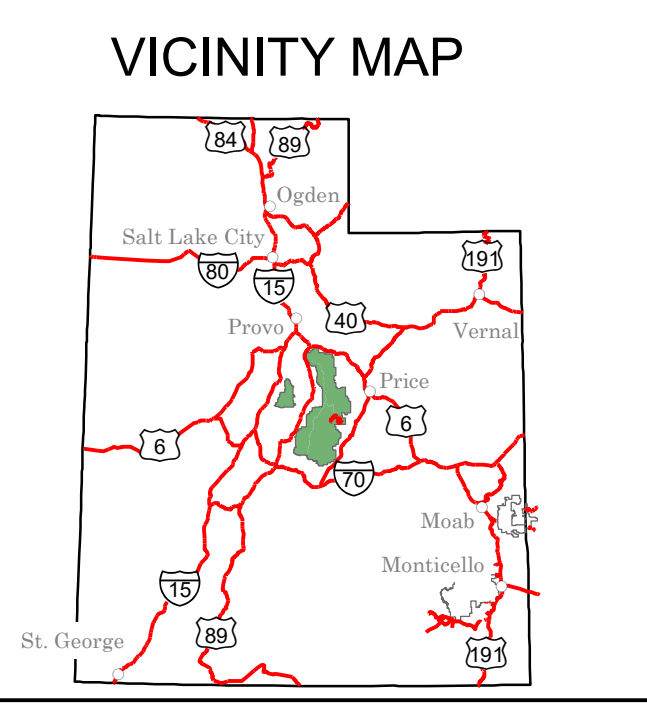




WELCOME TO THE MANTI-LA SAL NATIONAL FOREST FERRON-PRICE AND SANPETE DISTRICTS



INFORMATION SOURCES

Manti-La Sal National Forest Supervisor's Office
599 West Price River Drive
Price, UT 84501
435-637-2817

Ferron/Price Office
115 West Canyon Road
Ferron, UT 84533
435-384-2372

Moab Office
62 East 100 North
Moab, UT 84532
435-259-7155

Monticello Office
432 E Center St
Monticello, UT 84535
435-587-2041

Sanpete Office
540 North Main Street
Ephraim, UT 84627
435-283-4151

For Specific Road and Trail Opening Dates check <http://www.fs.usda.gov/mantisal/>

For Emergency Services
Dial 911

Emergency Contacts

EMERGENCIES ONLY: 911
Report Fires to Moab Dispatch: 435-259-1850
Search and Rescue:
Carbon County Sheriff: 435-436-3251
Emery County Sheriff: 435-581-3404
Sanpete County Sheriff: 435-835-2191
Juab County Sheriff: 435-623-1344

SAFETY

Much of the Manti-La Sal National Forest is remote. Medical assistance may not be readily available. Cellular telephones do not work in most areas of the Forest. Take adequate food, water, first-aid supplies, and other equipment appropriate for the conditions, your planned activity, and expected weather.

All surface water, though it appears clear and cool, should be boiled or treated for at least five minutes prior to drinking or using for food preparation.

Most roads on the Forest are native surface and become impassable during and after storms. They can be treacherous. It is vital to be aware of the weather and conditions where you will be traveling. Call a local Forest Service Office for more information if you are unsure of the situation.

Temperatures on the forest can vary widely depending on location, time of day and season

PURPOSE AND CONTENTS OF THIS MAP

The designations shown on this motor vehicle use map (MUVUM) were made by the responsible official pursuant to 36 CFR 212.51, as effective as of the date on the front cover of the MUVUM, and will remain in effect until superseded by the next year's MUVUM.

It is the responsibility of the user to consult the current MUVUM. This MUVUM shows the National Forest System roads, National Forest System trails, and the areas on National Forest System lands in the Manti-La Sal National Forest that are designated for motor vehicle use pursuant to 36 CFR 212.51. The MUVUM also identifies the vehicle classes allowed on each route and in each area, and any seasonal restrictions that apply on those routes and in those areas.

Designation of a road, trail, or area for motor vehicle use by a particular class of vehicle under 36 CFR 212.51 should not be interpreted as encouragement of driving use or implying that the road, trail, or area is passable, actively maintained, or safe for travel. Motor vehicle designations include parking along designated routes and at facilities associated with designated routes. Motor vehicle designations do not constitute a warranty of safety, and they do not when not causing damage to National Forest System resources. Seasonal weather conditions and natural events may render designated roads and trails impassable for extended periods. Designated areas may contain dangerous or impassable terrain. Many designated roads and trails may be passable only by high-clearance vehicles or four-wheel-drive vehicles. Maintenance of designated roads and trails will depend on available resources, and many may receive little maintenance.

This motor vehicle use map identifies those roads, trails, and areas designated for motor vehicle use under 36 CFR 212.51 for the purpose of enforcing the prohibition at 36 CFR 261.13. This is a limited purpose. The other public roads are shown for information and navigation purposes only and are not subject to designation under the Forest Service travel management regulation.

These designations apply only to National Forest System roads, National Forest System trails, and areas on National Forest System lands.

OPERATOR RESPONSIBILITIES

Operating a motor vehicle on National Forest System roads, National Forest System trails, and in areas on National Forest System lands carries a greater responsibility than operating that vehicle in a city or other developed setting. Not only must you know and follow all applicable traffic laws, you need to show concern for the environment as well as other forest users. The misuse of motor vehicles can lead to the temporary or permanent closure of any designated road, trail, or area. As a motor vehicle operator, you are also subject to State traffic laws, including State requirements for licensing, registration, and operation of the vehicle in question.

Motor vehicle use, especially off-highway vehicle use, involves inherent risks that may cause property damage, serious injury, and possible death to participants. Drive cautiously and anticipate rough surfaces and features, such as snow, mud, vegetation, and water crossings common to remote driving conditions. By your participation, you voluntarily assume full responsibility for these damages, risks, and dangers. Take care at all times to protect yourself and those under your responsibility.

Much of the Manti-La Sal National Forest is remote. Medical assistance may not be readily available. Cellular telephones do not work in many areas of the Manti-La Sal National Forest. Take adequate food, water, first-aid supplies, and other equipment appropriate for the conditions and expected weather.

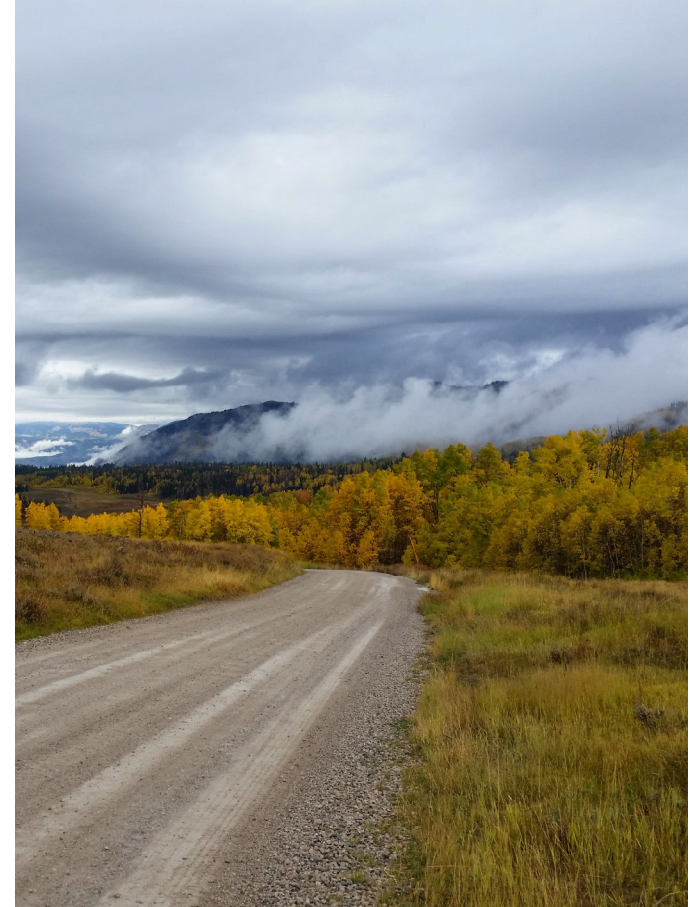
ALWAYS REMEMBER TO RESPECT PRIVATE LAND! PROTECT YOUR PRIVACY! STAY ON DESIGNATED ROADS AND TRAILS AND IN DESIGNATED AREAS.

Read and understand this map in its entirety. If you have questions, please contact the Manti-La Sal National Forest for clarification.

As a motor vehicle operator on a National Forest System road, trail, or area you must comply with this map, as well as all Federal, State, and local laws and regulations. Compliance with these rules is your responsibility.

HOW TO USE THIS MAP

The Travel Map is a companion map to the Forest Motor Vehicle Use Map (MUVUM) and Forest Visitor Map. It is intended to give more information about the landscape where roads and motorized trails are located and provide better wayfinding for the user than the MUVUM. This Travel Map does not display non-motorized trails or detailed information regarding features and attractions that are found on the Forest Visitor Map. The MUVUM is published annually and identifies the roads, trails, and areas where motor vehicles are allowed. In general, motorized travel off designated roads and trails is prohibited. Please see the MUVUM for information on the type of activity. This Travel map shows only long-term general rules; the Forest Supervisor may issue temporary orders that differ from the map. Temporary orders are available for public view at the District Offices and the Forest Supervisor's Office.



PROHIBITIONS

It is prohibited to possess or operate a motor vehicle on National Forest System lands on the Manti-La Sal National Forest other than in accordance with these designations (36 CFR 261.13).

Violators of 36 CFR 261.13 are subject to a fine of up to \$5,000, imprisonment for up to 6 months, or both (18 U.S.C. 3671(e)). This prohibition applies regardless of the presence or absence of signs.

This map does not display nonmotorized uses, over-snow uses, or other facilities and attractions on the Manti-La Sal National Forest. Obtain forest visitor information from the local national forest office.

Designated roads, trails and areas may also be subject to temporary, emergency closures. As a visitor, you must comply with signs notifying you of such restrictions. A national forest may issue the order to close a road, trail or area on a temporary basis to protect the life, health, or safety of forest visitors or the natural or cultural resources in these areas. Such a temporary and/or emergency closure are consistent with the Travel Management Rule (36 CFR 212.52 (b), 36 CFR 261 subpart B).

The designation "road or trail open to all motor vehicles" does not supersede State traffic law.

BLANKET STATEMENTS FOR TRAVEL MANAGEMENT

Motor vehicle use off of designated roads and trails for the purpose of dispersed camping is permitted for up to 150 feet from the centerline of the road or trail for the period 01/01 to 12/31.

Complete route numbers begin with the number 6 for the Manti-La Sal National Forest. Route numbers shown on the table include this prefix (see 50014).

The Manti-La Sal National Forest is a diverse landscape. Whether you enjoy deep sandstone canyons, mountaintops, meadows, lakes or streams, you can find a favorite get away here. The Ferron-Price and Sanpete Districts comprise most of the Wasatch Plateau and a portion of the Sanpitch Mountains. The Forest is well known for stunning vistas and great recreational pursuits. The Arapahoe OHV Trail system is a great family trail with plenty of advanced sections for experienced riders. Whether camping at one of many Forest campgrounds or dispersed sites, the trail is easy to access from any part of the Wasatch Plateau.

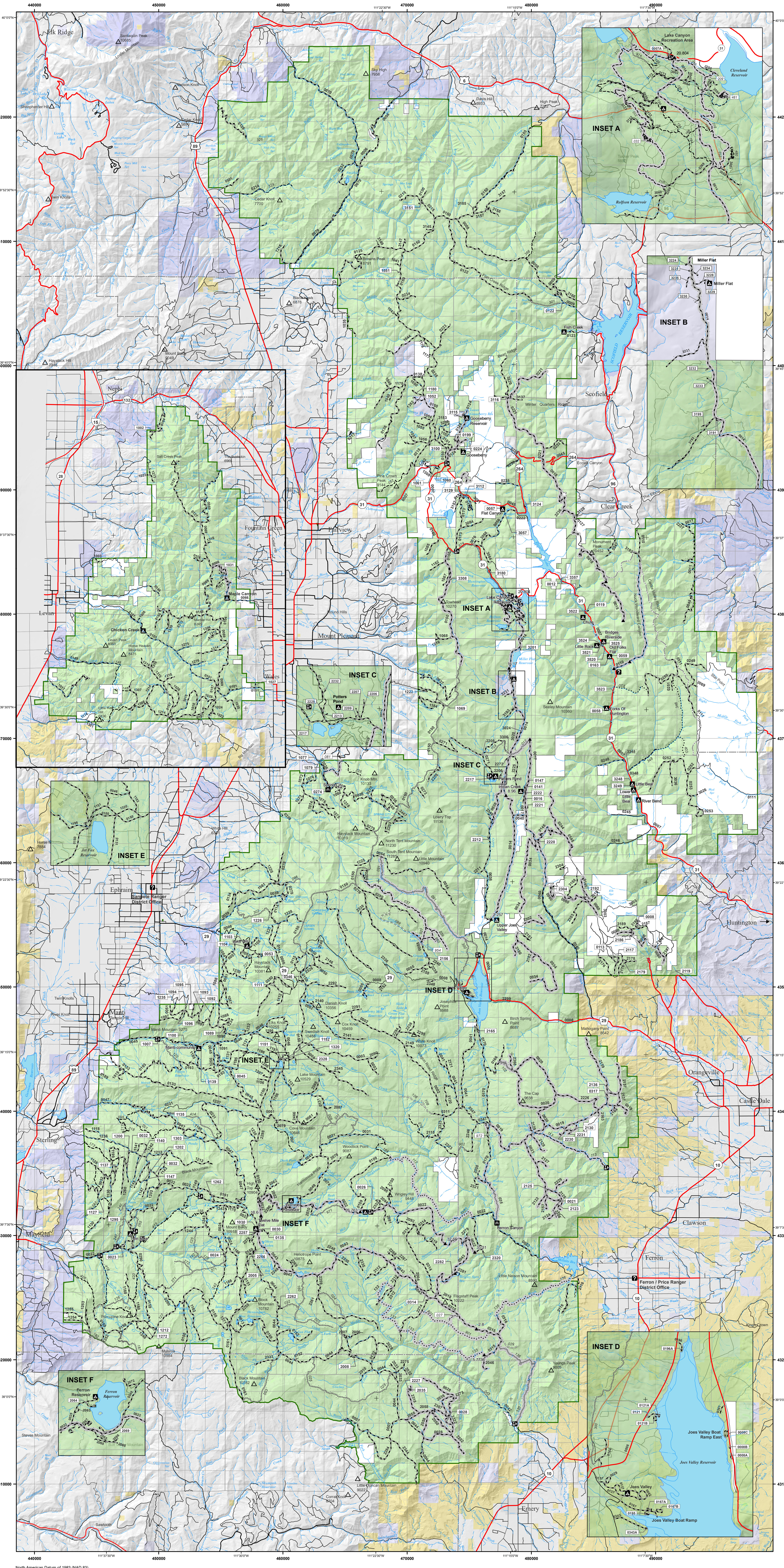
The Forest offers people a retreat from the hurry of modern life. If you seek peace and quiet, an opportunity to see some of the most memorable views in Utah, or engage in driving, hiking, biking, hunting, fishing, camping or climbing, you can do it here.

Whether you visit the Forest for a day, a weekend, a week or longer, we welcome you and hope this map helps you find your way through this incredible landscape.

Legend

- Roads Open to Highway Legal Vehicles
- Roads Open to all Vehicles
- Trails Open to all Vehicles
- Trails Open to Vehicles 50' or Less in Width
- Trails Open to Wheeled Vehicles
- 50' or Less in Width
- Trails Open to Motorcycles Only
- Special Vehicle Designation (See Table)
- Seasonal Designation (See Table)
- Interstate
- Highways, U.S. State, County & Other Public Roads
- Other Public Roads
- Short Route Identifier
- Milepost Marker
- FS Campgrounds
- Picnic Area
- Motorist Trailhead
- Information Site
- Peaks
- Forest Boundary
- National Forest System Lands within the National Forest
- Wilderness Areas
- Political Boundary
- Township and Range Lines
- Section Lines
- Large Lakes and Rivers
- BLM
- NPS / OTHER FED
- PRIVATE OR UNDESIGNATED
- STATE LAND - PUBLIC USE
- STATE LAND OTHER

Scale: 0 0.5 1 2 3 4 5 Miles



Route Number	Segment	Special Vehicle Designation	Days Allowed	Beginning Month	Ending Month	Vehicle Class	Segment	Special Vehicle Designation	Days Allowed	Beginning Month	Ending Month	Vehicle Class
50014	50014-001	Motorcycles Only	Seasonal	05/01	10/31	Motorcycles	50014-002	Motorcycles Only	Seasonal	05/01	10/31	Motorcycles
50014	50014-003	Motorcycles Only	Seasonal	05/01	10/31	Motorcycles	50014-004	Motorcycles Only	Seasonal	05/01	10/31	Motorcycles
50014	50014-005	Motorcycles Only	Seasonal	05/01	10/31	Motorcycles	50014-006	Motorcycles Only	Seasonal	05/01	10/31	Motorcycles
50014	50014-007	Motorcycles Only	Seasonal	05/01	10/31	Motorcycles	50014-008	Motorcycles Only	Seasonal	05/01	10/31	Motorcycles
50014	50014-009	Motorcycles Only	Seasonal	05/01	10/31	Motorcycles	50014-010	Motorcycles Only	Seasonal	05/01	10/31	Motorcycles
50014	50014-011	Motorcycles Only	Seasonal	05/01	10/31	Motorcycles	50014-012	Motorcycles Only	Seasonal	05/01	10/31	Motorcycles
50014	50014-013	Motorcycles Only	Seasonal	05/01	10/31	Motorcycles	50014-014	Motorcycles Only	Seasonal	05/01	10/31	Motorcycles
50014	50014-015	Motorcycles Only	Seasonal	05/01	10/31	Motorcycles	50014-016	Motorcycles Only	Seasonal	05/01	10/31	Motorcycles
50014	50014-017	Motorcycles Only	Seasonal	05/01	10/31	Motorcycles	50014-018	Motorcycles Only	Seasonal	05/01	10/31	Motorcycles
50014	50014-019	Motorcycles Only	Seasonal	05/01	10/31	Motorcycles	50014-020	Motorcycles Only	Seasonal	05/01	10/31	Motorcycles
50014	50014-021	Motorcycles Only	Seasonal	05/01	10/31	Motorcycles	50014-022	Motorcycles Only	Seasonal	05/01	10/31	Motorcycles
50014	50014-023	Motorcycles Only	Seasonal	05/01	10/31	Motorcycles	50014-024	Motorcycles Only	Seasonal	05/01	10/31	Motorcycles
50014	50014-025	Motorcycles Only	Seasonal	05/01	10/31	Motorcycles	50014-026	Motorcycles Only	Seasonal	05/01	10/31	Motorcycles
50014	50014-027	Motorcycles Only	Seasonal	05/01	10/31	Motorcycles	50014-028	Motorcycles Only	Seasonal	05/01	10/31	Motorcycles
50014	50014-029	Motorcycles Only	Seasonal	05/01	10/31	Motorcycles	50014-030	Motorcycles Only	Seasonal	05/01	10/31	Motorcycles
50014	50014-031	Motorcycles Only	Seasonal	05/01	10/31	Motorcycles	50014-032	Motorcycles Only	Seasonal	05/01	10/31	Motorcycles
50014	50014-033	Motorcycles Only	Seasonal	05/01	10/31	Motorcycles	50014-034	Motorcycles Only	Seasonal	05/01	10/31	Motorcycles
50014	50014-035	Motorcycles Only	Seasonal	05/01	10/31	Motorcycles	50014-036	Motorcycles Only	Seasonal	05/01	10/31	Motorcycles
50014	50014-037	Motorcycles Only	Seasonal	05/01	10/31	Motorcycles	50014-038	Motorcycles Only	Seasonal	05/01	10/31	Motorcycles
50014	50014-039	Motorcycles Only	Seasonal	05/01	10/31	Motorcycles	50014-040	Motorcycles Only	Seasonal	05/01	10/31	Motorcycles
50014	50014-041	Motorcycles Only	Seasonal	05/01	10/31	Motorcycles	50014-042	Motorcycles Only	Seasonal	05/01	10/31	Motorcycles
50014	50014-043	Motorcycles Only	Seasonal	05/01	10/31	Motorcycles	50014-044	Motorcycles Only	Seasonal	05/01	10/31	Motorcycles
50014	50014-045	Motorcycles Only	Seasonal	05/01	10/31	Motorcycles	50014-046	Motorcycles Only	Seasonal	05/01	10/31	Motorcycles
50014	50014-047	Motorcycles Only	Seasonal	05/01	10/31	Motorcycles	50014-048	Motorcycles Only	Seasonal	05/01	10/31	Motorcycles
50014	50014-049	Motorcycles Only	Seasonal	05/01	10/31	Motorcycles	50014-050	Motorcycles Only	Seasonal	05/01	10/31	Motorcycles
50014	50014-051	Motorcycles Only	Seasonal	05/01	10/31	Motorcycles	50014-052	Motorcycles Only	Seasonal	05/01	10/31	Motorcycles
50014	50014-053	Motorcycles Only	Seasonal	05/01	10/31	Motorcycles	50014-054	Motorcycles Only	Seasonal	05/01	10/31	Motorcycles
50014	50014-055	Motorcycles Only	Seasonal	05/01	10/31	Motorcycles	50014-056	Motorcycles Only	Seasonal	05/01	10/31	Motorcycles
50014	50014-057	Motorcycles Only	Seasonal	05/01	10/31	Motorcycles	50014-058	Motorcycles Only	Seasonal	05/01	10/31	Motorcycles
50014	50014-059	Motorcycles Only	Seasonal	05/01	10/31	Motorcycles	50014-060	Motorcycles Only	Seasonal	05/01	10/31	Motorcycles
50014	50014-061	Motorcycles Only	Seasonal	05/01	10/31	Motorcycles	50014-062	Motorcycles Only	Seasonal	05/01	10/31	Motorcycles
50014	50014-063	Motorcycles Only	Seasonal	05/01	10/31	Motorcycles	50014-064	Motorcycles Only	Seasonal	05/01	10/31	Motorcycles
50014	50014-065	Motorcycles Only	Seasonal	05/01	10/31	Motorcycles	50014-066	Motorcycles Only	Seasonal	05/01	10/31	Motorcycles
50014	50014-067	Motorcycles Only	Seasonal	05/01	10/31	Motorcycles	50014-068	Motorcycles Only	Seasonal	05/01	10/31	Motorcycles
50014	50014-069	Motorcycles Only	Seasonal	05/01	10/31	Motorcycles	50014-070	Motorcycles Only	Seasonal	05/01	10/31	Motorcycles
50014	50014-071	Motorcycles Only	Seasonal	05/01	10/31	Motorcycles	50014-072	Motorcycles Only	Seasonal	05/01	10/31	Motorcycles
50014	50014-073	Motorcycles Only	Seasonal	05/01	10/31	Motorcycles	50014-074	Motorcycles Only	Seasonal	05/01	10/31	Motorcycles
50014	50014-075	Motorcycles Only	Seasonal	05/01	10/31	Motorcycles	50014-076	Motorcycles Only	Seasonal	05/01	10/31	Motorcycles
50014	50014-077	Motorcycles Only	Seasonal	05/01	10/31	Motorcycles	50014-078	Motorcycles Only	Seasonal	05/01	10/31	Motorcycles
50014	50014-079	Motorcycles Only	Seasonal	05/01	10/31	Motorcycles	50014-080	Motorcycles Only	Seasonal	05/01	10/31	Motorcycles
50014	50014-081	Motorcycles Only	Seasonal	05/01	10/31	Motorcycles	50014-082	Motorcycles Only	Seasonal	05/01	10/31	Motorcycles
50014	50014-083	Motorcycles Only	Seasonal	05/01	10/31	Motorcycles	50014-084	Motorcycles Only	Seasonal	05/01	10/31	Motorcycles
50014	50014-085	Motorcycles Only	Seasonal	05/01	10/31	Motorcycles	50014-086	Motorcycles Only	Seasonal	05/01	10/31	Motorcycles
50014	50014-087	Motorcycles Only	Seasonal	05/01	10/31	Motorcycles	50014-088	Motorcycles Only	Seasonal	05/01	10/31	Motorcycles
50014	50014-089	Motorcycles Only	Seasonal	05/01	10/31	Motorcycles	50014-090	Motorcycles Only	Seasonal	05/01	10/31	Motorcycles
50014	50014-091	Motorcycles Only	Seasonal	05/01	10/31	Motorcycles	50014-092	Motorcycles Only	Seasonal	05/01	10/31	Motorcycles
50014	50014-093	Motorcycles Only	Seasonal	05/01	10/31	Motorcycles	50014-094	Motorcycles Only	Seasonal	05/01	10/31	Motorcycles
50014	50014-095	Motorcycles Only	Seasonal	05/01	10/31	Motorcycles	50014-096	Motorcycles Only	Seasonal	05/01	10/31	Motorcycles
50014	50014-097	Motorcycles Only	Seasonal	05/01	10/31	Motorcycles	50014-098	Motorcycles Only	Seasonal	05/01	10/31	Motorcycles
50014	50014-099	Motorcycles Only	Seasonal	05/01	10/31	Motorcycles	50014-100	Motorcycles Only	Seasonal	05/01	10/31	Motorcycles

Route Number	Legend
50017	Motorcycles Only
50018	Motorcycles Only
50019	Motorcycles Only
50020	Motorcycles Only
50021	Motorcycles Only
50022	Motorcycles Only
50023	Motorcycles Only
50024	Motorcycles Only
50025	Motorcycles Only
50026	Motorcycles Only
50027	Motorcycles Only
50028	Motorcycles Only
50029	Motorcycles Only
50030	Motorcycles Only
50031	Motorcycles Only
50032	Motorcycles Only
50033	Motorcycles Only
50034	Motorcycles Only
50035	Motorcycles Only
50036	Motorcycles Only
50037	Motorcycles Only
50038	Motorcycles Only
50039	Motorcycles Only
50040	Motorcycles Only
50041	Motorcycles Only
50042	Motorcycles Only
50043	Motorcycles Only
50044	Motorcycles Only
50045	Motorcycles Only