

NEBO LOOP COMPLEX
Nebo Loop Scenic Byway
28 Miles

Nebo Loop Snowmobile Complex provides outstanding snowmobiling opportunities December through March. Elevations reach 9,200 feet, making the scenic panorama breathtaking. Trails provide access to excellent winter scenery and enjoyable play areas including the Mt. Nebo high-tops/wilderness area, and the Wasatch Range.

Access to the complex is provided through the Payson and Salt Creek canyon trailheads. Services along this trail are limited, and snowmobilers should plan to take extra food and fuel. There are many unroomed and unsigned side trails in the area. Riding in the mountains of Utah presents some unique life-threatening winter hazards. Due to the steepness of the terrain, there is a risk of avalanche in these areas and snowmobilers should take appropriate precautions.

NEBO LOOP
SNOWMOBILE COMPLEX

- Let someone know where you're going and when you expect to be back. Never ride alone.
- Be familiar with your machine. Know its fuel capacity and basic maintenance procedures.
- Carry extra spark plugs, extra drive belt, a tool kit, and a survival kit.
- Watch your fuel supply. Ride out only to a point where your fuel gauge reads one-half; then follow your tracks back to the trailhead.
- Ride on the right side of the trail, giving the uphill bound machine the right of way. Be careful not to follow other snowmobiles too closely.
- Dress for changing weather conditions. Layered clothing allows riders to adjust to changing temperatures and conditions.
- Check the weather and avalanche danger forecasts to avoid potentially dangerous situations.
- Never harass or chase wildlife.
- Use headlights and taillights in both daylight and darkness.
- Please park cars, trailers, campers etc., in designated snowmobile parking lots.

SAFETY TIPS

- Always be on the lookout for trail groomers on Utah's trails. Ride under control at all times.
- An adult should accompany and supervise operators ages eight through 15 at all times.
- Please observe the following rules when operating snowmobiles on public lands:
- No one under eight years of age may operate a snowmobile on public roads, trails, or lands.
- Utah resident operators ages eight through 15 must possess an OHV education certificate for snowmobile use in order to legally operate a snowmobile on public property.
- Resident operators 16 years of age or older must possess a valid driver's license or an OHV education certificate.
- For more information on obtaining an OHV education certificate or complete information on OHV laws and rules, please contact the Division of Utah State Parks and Recreation at 1-800-OHV-RIDE.



Snowmobilers are urged to telephone the Avalanche Forecast Center for updated snow conditions and weather information before venturing into the backcountry.

Salt Lake City.....	801-364-1581
Ogden.....	801-626-8600
Provo.....	801-378-4333
Logan.....	435-797-4146

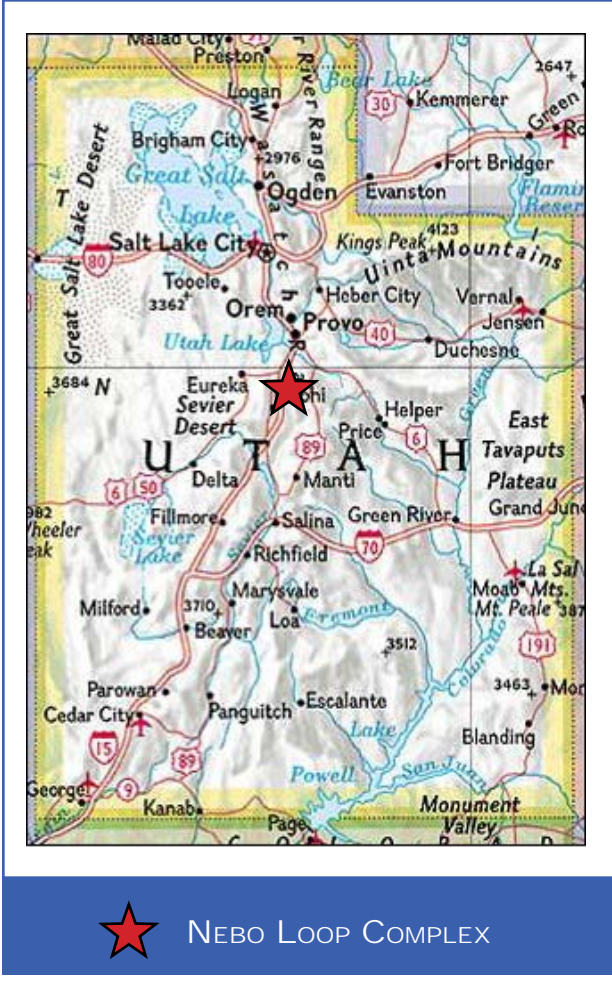
For local conditions and grooming information contact:

- Utah Division of State Parks and Recreation
1-800-OHV-RIDE (1-800-648-7433)
801-538-7433 (Salt Lake City area)
- Utah Department of Transportation
Road Conditions 1-800-492-2400
- Uinta National Forest
Spanish Fork Ranger District
801-798-3571

Information contained in this map was accurate at the time of printing and/or publication. Policies, facilities, fees, hours and regulations, etc. change as mandated. Grooming is dependent on snow conditions, schedules, equipment and resources availability. For updated information please contact the Utah Division of State Parks and Recreation.

The Utah Department of Natural Resources receives federal aid and prohibits discrimination on the basis of race, color, sex, age national origin or disability. For information or complaints regarding discrimination, contact Executive Director, Utah Department of Natural Resources, PO Box 145610, Salt lake City, UT 84114-5610 or Equal Employment Opportunity Commission, 1801 L Street, NW, Washington, DC 20507-0001.

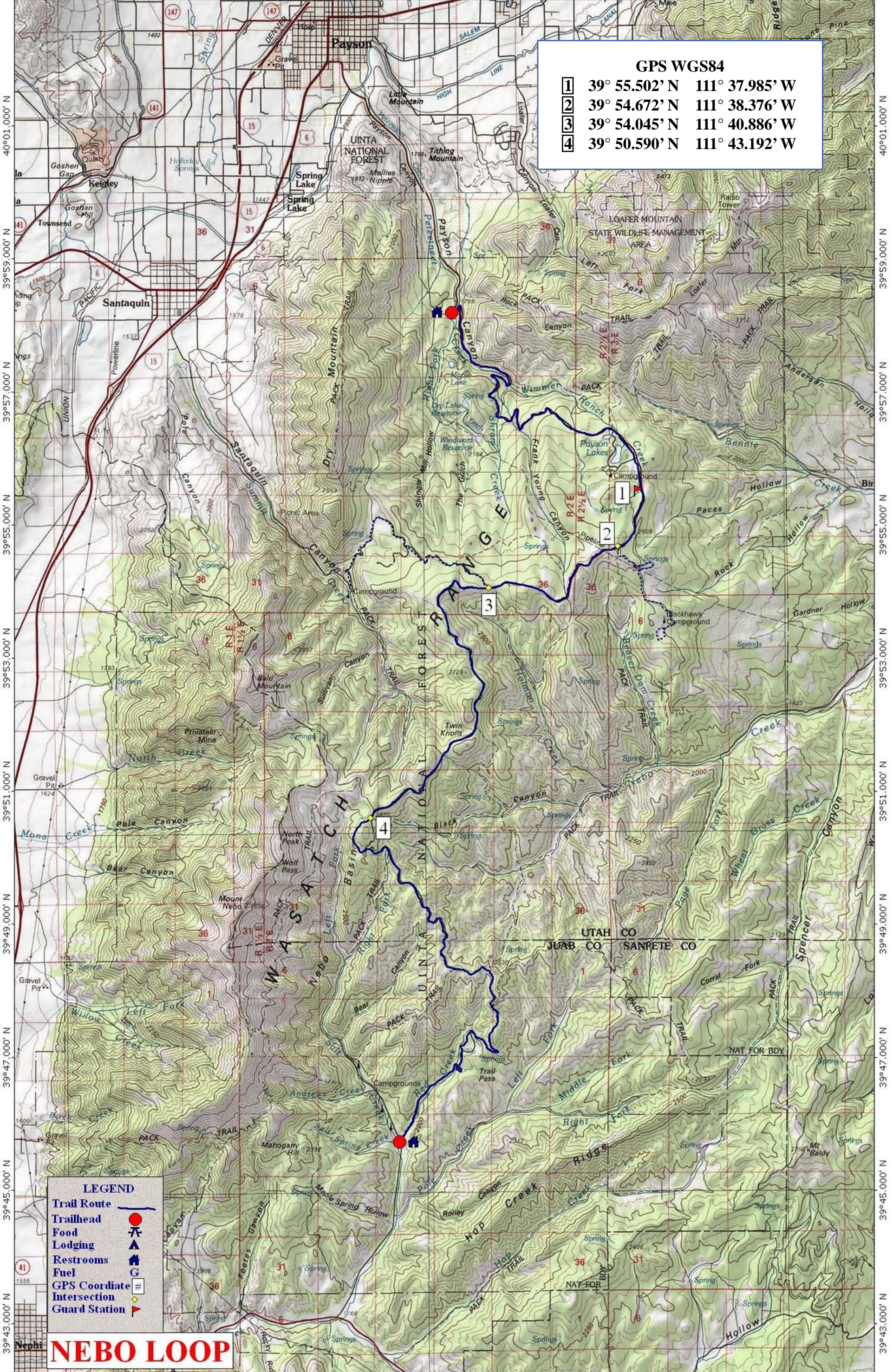
Printed on recycled paper.



NEBO LOOP COMPLEX



111°49.000' W 111°47.000' W 111°45.000' W 111°43.000' W 111°41.000' W 111°39.000' W 111°37.000' W WGS84 111°34.000' W



GPS WGS84

1	39° 55.502' N	111° 37.985' W
2	39° 54.672' N	111° 38.376' W
3	39° 54.045' N	111° 40.886' W
4	39° 50.590' N	111° 43.192' W

LEGEND

Trail Route	
Trailhead	
Food	
Lodging	
Restrooms	
Fuel	
GPS Coordinate	
Intersection	
Guard Station	

NEBO LOOP

111°49.000' W 111°47.000' W 111°45.000' W 111°43.000' W 111°41.000' W 111°39.000' W 111°37.000' W WGS84 111°34.000' W

